

INSTITUTE OF TRANSPORTATION ENGINEERS

ANNUAL MEETING & EXHIBITION

JULY 30, 2017 - AUG 2, 2017

LOWER CONCOURSE LEVEL



REVISION DATE:
8/16/2017 YS

BOOTH COUNT

Dimension	Size	Qty	SqFt
10'x10'	100	56	5,600
10'x15'	150	1	150
10'x20'	200	8	1,600
20'x20'	400	1	400
20'x30'	600	1	600
Totals:		67	8,350

- **PRIME SPACE**
10'x10' - \$3,100 USD
 \$4,190 CAD
10'x20' - \$4,600 USD
 \$6,215 CAD
- REGULAR SPACE**
10'x10' - \$2,800 USD
 \$3,785 CAD
10'x20' - \$4,300 USD
 \$5,810 CAD
- RESERVED / SOLD**

BLDG. LEGEND:

FREEMAN

DRAWING STARTED:
6/16/2017 YS
FILE PATH:
468847 ITE17 FP.dwg

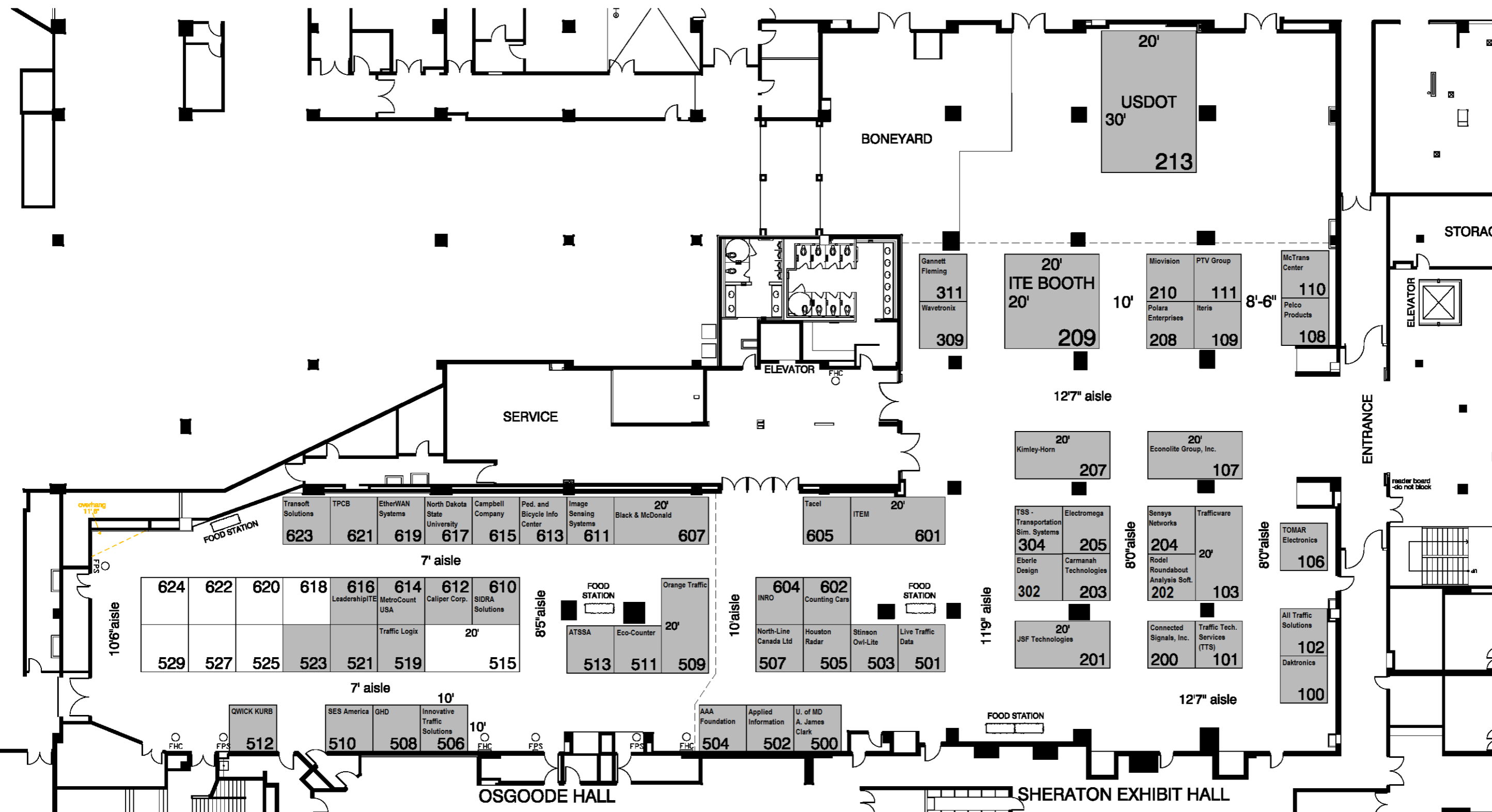
DRAWING NAME:
468847 ITE17 FP
HALL NAME:
SHERATON CENTRE
JOB NUMBER:
435818
ACCT. EXEC.:
AP

NOT TO SCALE

DISCLAIMER

EVERY EFFORT HAS BEEN MADE TO ENSURE THE ACCURACY OF ALL INFORMATION CONTAINED ON THIS FLOORPLAN. HOWEVER NO WARRANTIES, EITHER EXPRESSED OR IMPLIED ARE MADE WITH RESPECT TO THIS FLOORPLAN. IF THE LOCATION OF BUILDING COLUMNS, UTILITIES OR OTHER ARCHITECTURAL COMPONENTS OF THE FACILITY IS A CONSIDERATION IN THE CONSTRUCTION OR USAGE OF AN EXHIBIT, IT IS THE SOLE RESPONSIBILITY OF THE EXHIBITOR TO PHYSICALLY INSPECT THE FACILITY TO VERIFY ALL DIMENSIONS AND LOCATIONS.
© COPYRIGHT 2007, FREEMAN CO. ALL RIGHTS RESERVED.

CONFIDENTIAL & PROPRIETARY
The information contained herein and attached to this email is the proprietary information of Freeman and by accessing the information, the recipient agrees to keep the information confidential and not disclose it to any third party without the prior consent of Freeman. Recipient also agrees to only use the information for its internal evaluation purposes and for no other purpose, without the prior consent of Freeman.



THE SHERATON CENTRE SHERATON EXHIBIT HALL & OSGOODE BALLROOM